

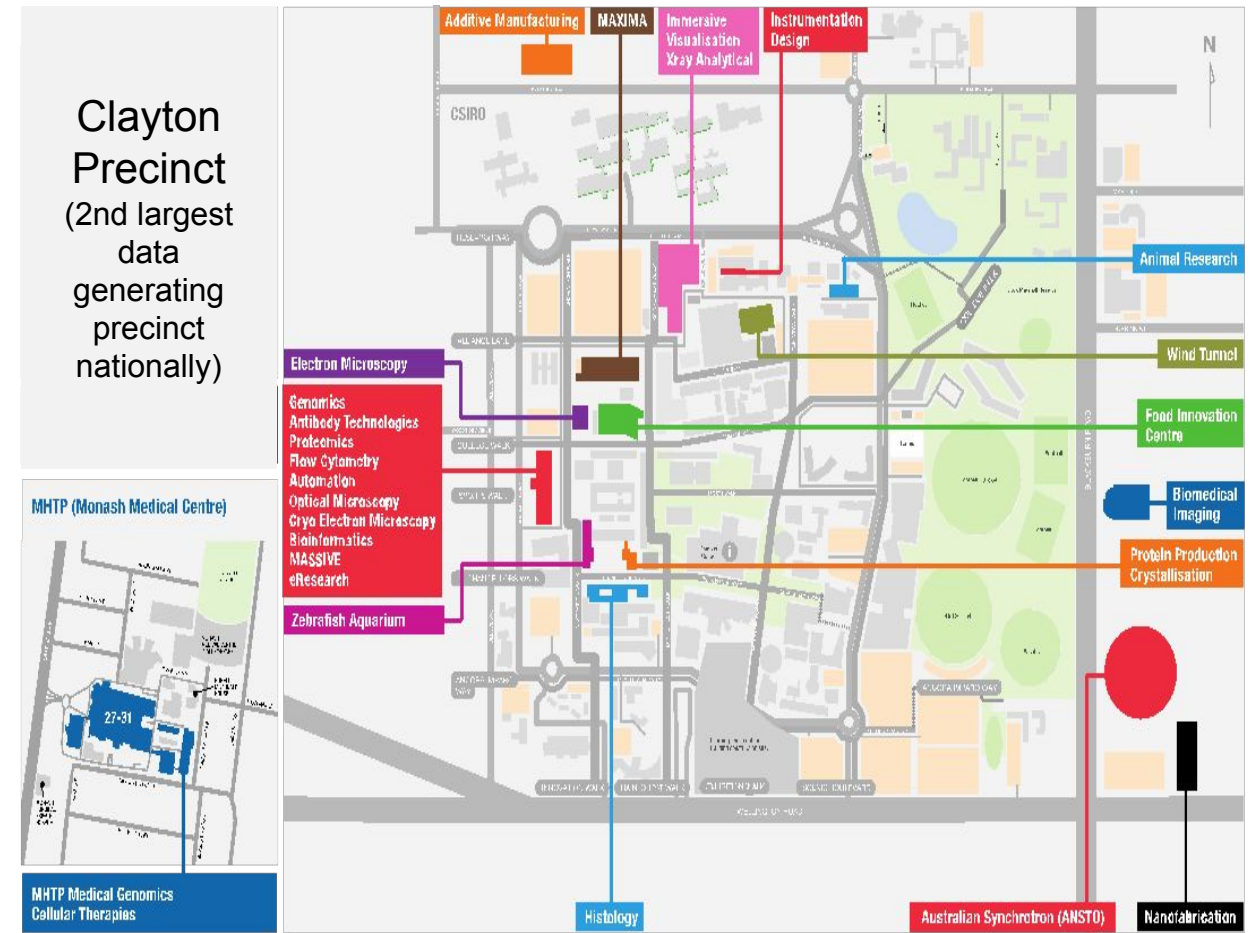
Accelerating skills development in data science and AI at scale

Presented by Komathy Padmanabhan, DSAI Platform Lead, Monash University
Titus Tang, Training Manager, DSAI platform, Monash University



with a purpose..

- Bring together and enhance existing capabilities of the university in AI and Data science
- Be a stepping stone for researchers with large and complex datasets to apply data science, Machine Learning and AI to their research
- Underpin the Monash Data Futures Institute, translating discoveries into life-changing, industry-changing and world-changing solutions



we are..



**Partnership &
collaborations**

Data & Tools

Skills & Knowledge

we do..

1

Foundational AI and ML
training programs



2

Communities of Practices
around challenges and
tools/methods



3

Demonstrative activities
for specific challenges

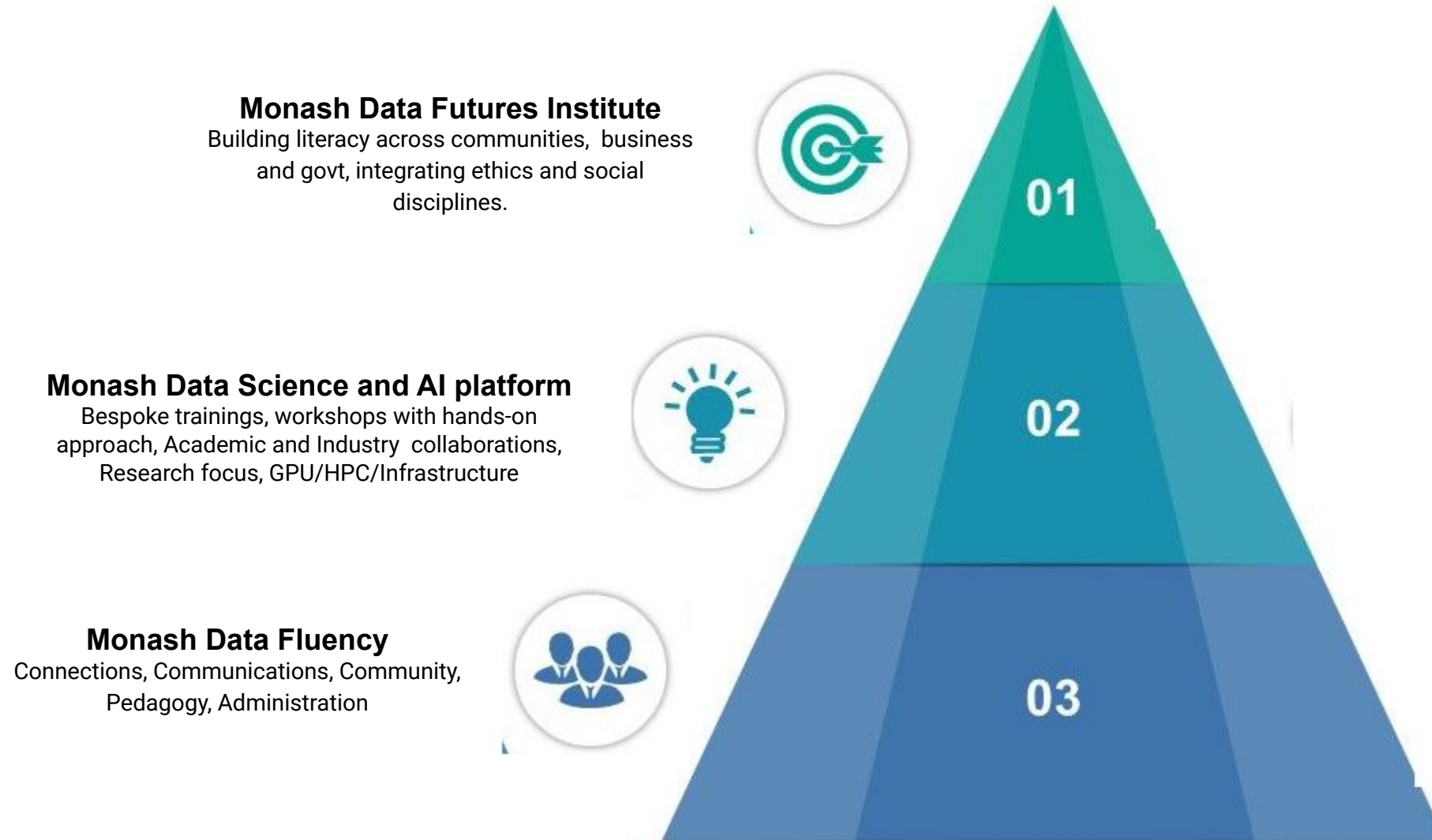


4

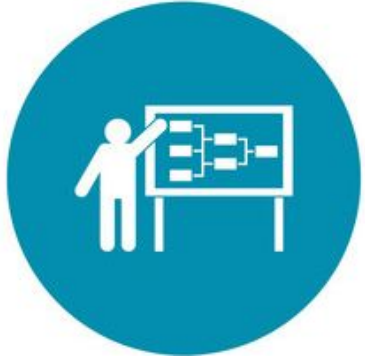
Hands on codesign with
researchers



Connecting Monash's training skills and opportunities



6 Month Snapshot



Training hours: **55**



People trained: **400+**



Number of organisations: **~20**
research, govt, and
commercial
institutions



Typical workshop
enrolment: **100%+**
waiting list



Hours of development
& delivery: **400+**

Training resources:

<https://doi.org/10.26180/13100513>

<https://doi.org/10.26180/13100519>

<https://doi.org/10.26180/13100510>

ARDC Platforms project - Environments to Accelerate Machine Learning Based Discovery

Partnership with UQ/QCIF

- Combined survey of gaps in skills and trainings for Data science and AI
- Provide seats to partners
- Share associate instructors/helpers/volunteers
- Develop combined training materials
- Publish a repository of open source trainings
- Train the trainer activities
- Establish a network of volunteers to deliver trainings at their local regions



National Workshops



Introduction to Deep Learning and TensorFlow

11 September 2020

Fully subscribed with waiting list

Attendees from ~20 research, govt, and commercial institutions



Deep Learning for Natural Language Processing

9 October 2020

Fully subscribed

Many return sign-ups from first workshop



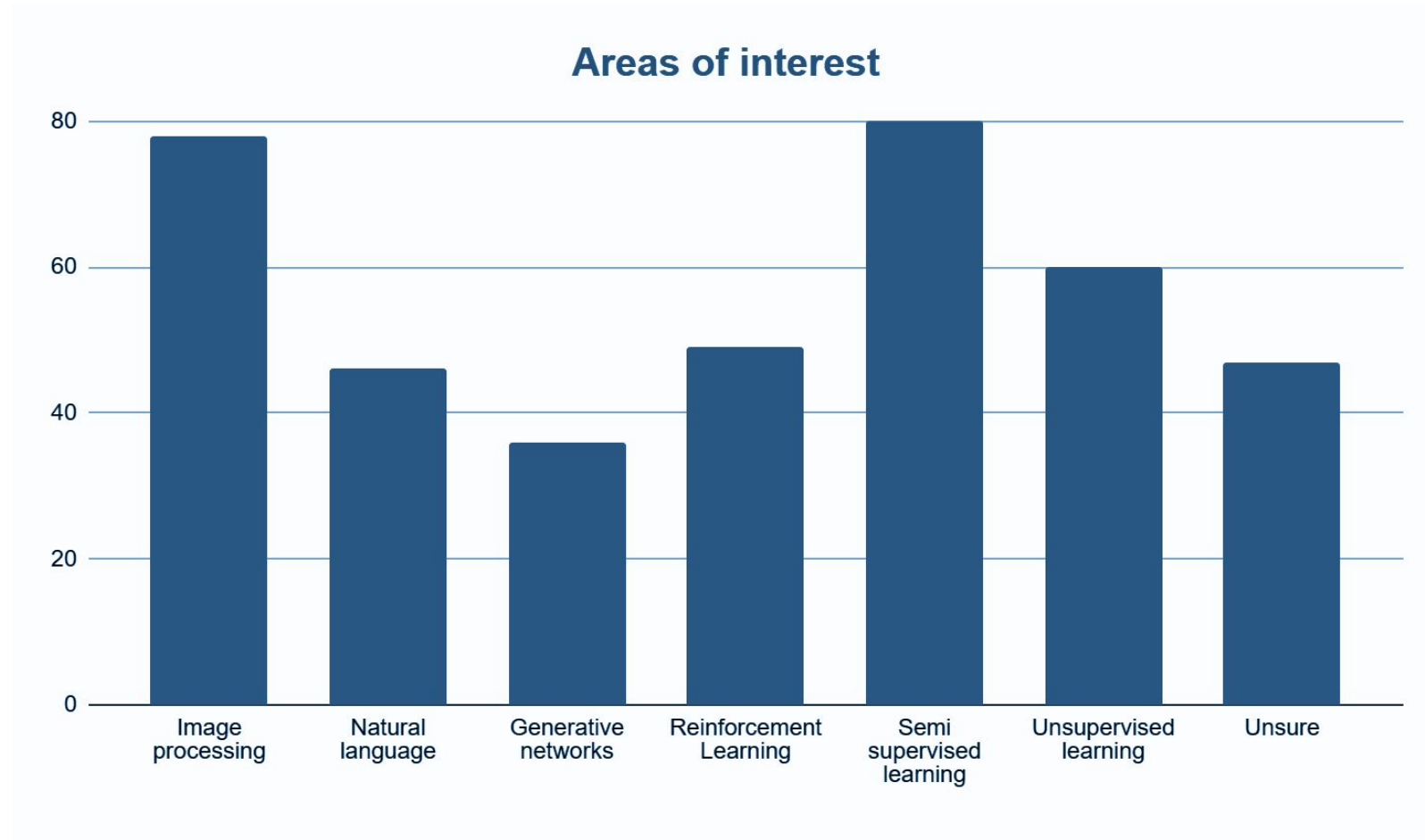
Data Visualisation and Storytelling

6 November 2020

Fully subscribed

Happening next week

As defined by the community



ARDC ML project - Environments to Accelerate Machine Learning Based Discovery

Soft launch of ML4AU

www.ML4AU.community

A national webpage that brings together machine learning resources, expertise, and connections for Australian researchers

We invite you to add your workshops and events to the site for community awareness

ML4AU Training Computing About

Contact Us

Bringing the Machine Learning Community together

ML4AU is a community page that collates machine learning events, training resources, and community connections for Australian researchers.

Help us improve these resources. You may [add training events](#) to this site, or [get in touch with us](#) about your ideas.

Training Events

Upcoming Machine Learning Training Events for Australian Researchers

Dec 3, 2020 -
TensorFlow, Deep Learning, Monash
University, Text Processing, Natural
Language Processing

Deep
Learning for
Natural

Nov 26, 2020 -
TensorFlow, Deep Learning, Monash
University

Introduction
to Deep
Learning

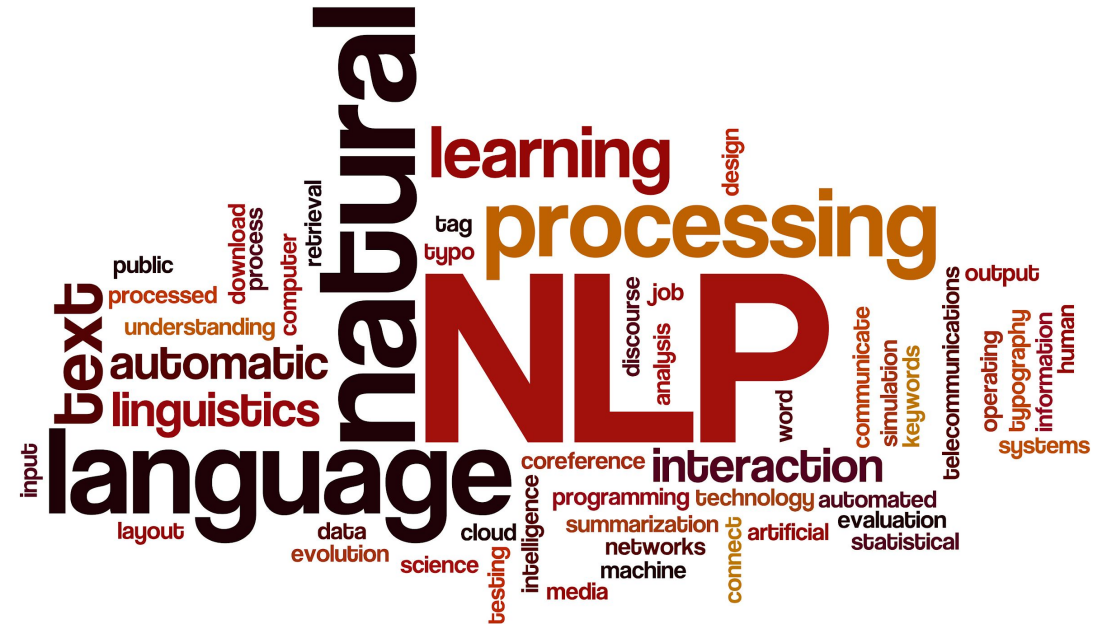
Nov 6, 2020 -
Monash University, Data Visualisation,
Storytelling, JavaScript, HTML

Data
Visualisation
and

Communities of Practice

Natural Language CoP

- Showcase event - introduction of NLP research in the community.
- Connecting researchers to practitioner and fundamental NLP research experts
- Exemplars - cogstack
- Recurring community meetings to encourage community cohesion.
- Slack channel to facilitate regular communication.
- Direct hands-on technical support where suitable.



Industry partnership

Facilitating access to industry learning tools & certifications



ONLINE
COURSES



INSTRUCTOR-LED
WORKSHOPS



UNIVERSITY
TRAINING



DEEP
LEARNING
INSTITUTE



AI School

aws  educate

Please contact us on

datascienceplatform@monash.edu

<https://www.monash.edu/researchinfrastructure/datascienceandai/home>