

PAIR

Partnership for Australia-Indonesia Research

AN OVERVIEW

CONTACT US

PAIR Program
The Australia-Indonesia Centre

Email: pair@ausindcentre.org
australiaindonesiacentre.org

ABOUT PAIR

The Partnership for Australia-Indonesia Research (PAIR) is an AIC initiative supported by the Australian Government, the Indonesian Government and 11 leading universities to advance the research linkages between the two countries and improve the impact of that research.

PAIR, operating from 2019 to 2022, focuses on the importance of knowledge production and research capability building to support development, planning and policy-making for both countries.

It demonstrates a research pathway-to-impact model that spans countries and institutions and that can be applied to any problem or location. Through the model, we seek to achieve two end-of-program outcomes (EOPOs):

1. A better quality of researched evidence that is relevant to and that addresses key policy challenges;
2. Building a network of researchers that conducts demand-driven, applied and interdisciplinary research.

Our research tackles the challenges of 'Connectivity, People and Place'. Connectivity is about connecting people and places, physically or non-physically, through transport or other communications.

As Indonesia invests big in building stronger physical linkages, especially in roads, ports, air and rail and between cities, towns, villages and islands, connectivity will have a significant impact and open up new possibilities for local communities. Our research explores how newly connected communities can take advantage of new opportunities.

Three Principles

PLACE-BASED

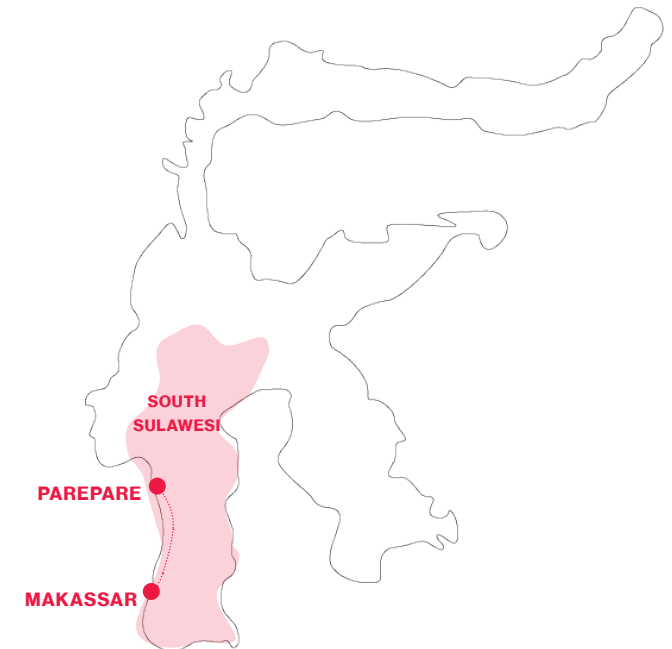
Anchoring research in one location – South Sulawesi – allows us to focus our activities and concentrate limited resources. One location also makes it possible for our researchers to engage meaningfully with real communities, immerse themselves in real settings and work with communities to tackle real challenges.

INTERDISCIPLINARY

Complex problems transcend disciplinary boundaries which require scientists and social scientists to work together. Our collaborative research model and university partner network draws together an interdisciplinary team of experts.

DEMAND-DRIVEN

We engage with stakeholders from villages, cities, provinces and at national level when defining problems and cocreating solutions. By engaging stakeholders from the start, we increase the likelihood of ideas and solutions being embraced and adopted at the end.



WHY SOUTH SULAWESI?

Eastern Indonesia is a priority region for the Indonesian Government. Sulawesi is of particular importance, with significant government investment to improve its infrastructure and connectivity. Makassar is building a new port, which will position it as a gateway to eastern Indonesia. New industrial economic zones are emerging and an ambitious trans-Sulawesi railway network is under construction.

The Research Program

The Research Program will focus on ‘Community-centric Infrastructure and Empowered Communities’. We will explore the challenges and opportunities new connectivity presents to local communities and how community-centric infrastructure can support urban-rural sustainability, resilience and productivity.

The PAIR design initially identified a broad set of domains - transport, energy, water and young people. Through ongoing consultations with government ministries, agencies and at provincial level, we have further refined the domains, their inter-dependencies and interaction – commodities; transport, logistics & supply chain; young people & development; and young people, health and wellbeing (see diagram to the right).

We will work with policy, business and communities to define a vision of community-centric infrastructure, and bring together an interdisciplinary team with complementary expertise to explore the connected domains and sub-domains.

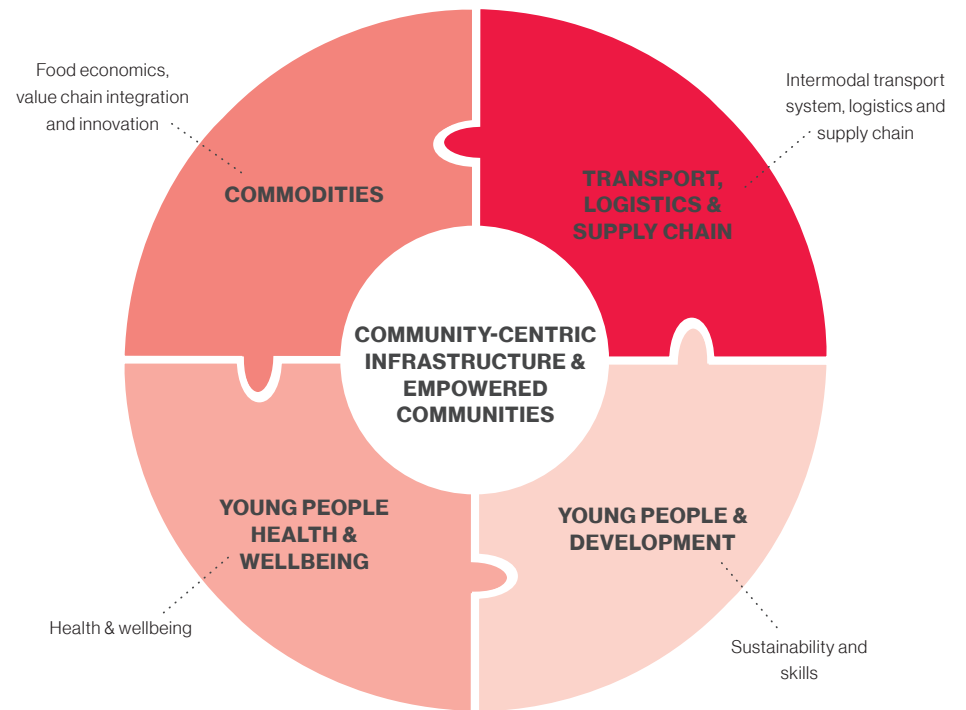
The Research Process

Our interdisciplinary, multi-institutional, demand-driven, team-based approach is fundamental to the way our researchers tackle problems that transcend disciplinary boundaries. Our approach fosters open, collaborative, multi-sectoral, and impactful research.

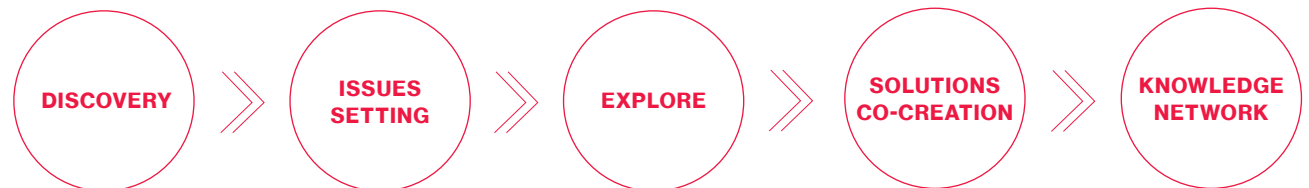
We will support our researchers in delivering research outputs – often of the non-traditionally academic variety – such as scoping studies, technical guidelines, case studies, explainers and infographics to reports and articles, including co-authored international scientific papers.

Our goals: to produce better quality evidence-based research and build an enduring network of researchers and collaborators.

Research domains: overlapping and interdependent



Five stages of research



Our research team

The AIC aims to be a platform that connects the next generation of Australian and Indonesian research leaders. To pursue this ambition we work with and support early, mid-career and established researchers in all our programs.

We involve them in our research and networking activities. We support their capability development and work with them as collaborators to identify research priorities, commission research and broker research partnerships.

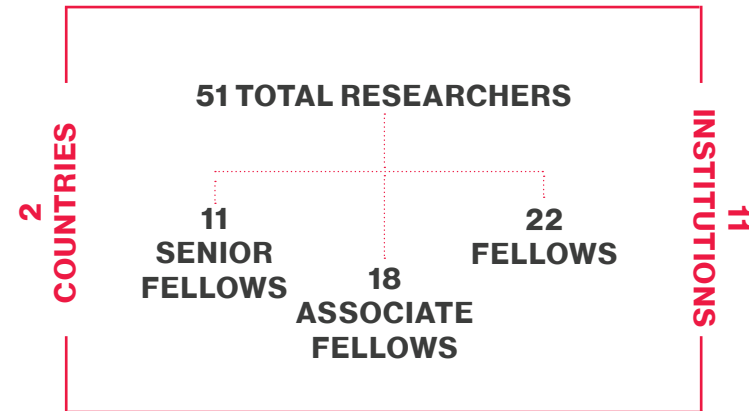
Critical to the Research Team-based model is the team structure. There are three levels of researchers: Senior Fellows, Fellows and Associate Fellows:

- » Our Senior Fellows are core to the program and will play an active role in the research process and spend time on the ground.
- » Our Fellows have an essential role in linking domains across the Research Program.
- » Associate Fellows will support the Senior Fellow and Fellows in conducting the research and provide administrative support to the projects.

We are building a team that develops strong working and research relationships. We have worked closely with each partner to identify the Senior Fellows to ensure research complementarity, equality and fairness across the 11 institutions.

Our team will be comprised of the following: 1 Senior Fellow per institution; 2 Fellows per institution; 1 full-time Associate Fellow per Australian partner institution; and 2 full-time Associate Fellows per Indonesian partner.

OUR RESEARCH TEAM



OUR PARTNER INSTITUTIONS

